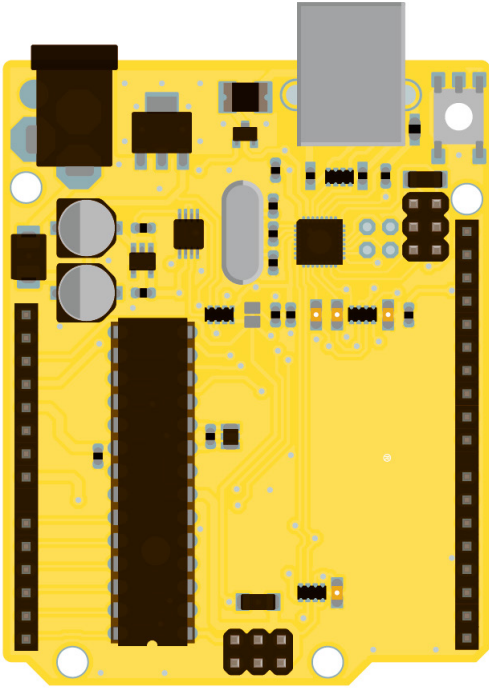


Yellow

what's  
next?™



### Interfaces

Serial	1xUART (shared w/ USB), 1xSPI, 1xTWI
USB	2.0 device

### General

Input Voltage	5V (USB/ext.) or 7-12V (Vin)
Power Consumption	26mA
PCB size	53mm x 68.5mm
Weight	25g

### Microcontroller

Microcontroller	ATmega328
Architecture	Microchip AVR 8-bit
Operating Voltage	5V
Flash Memory	32kB (2kB as bootloader)
SRAM	2kB
EEPROM	1kB
Clock Speed	16MHz
I/O Total	20
Digital (max)	20
PWM (max)	6
Analog (max)	6 (10-bit resolution)
DC Current per I/O pins	40mA (I/O pins)