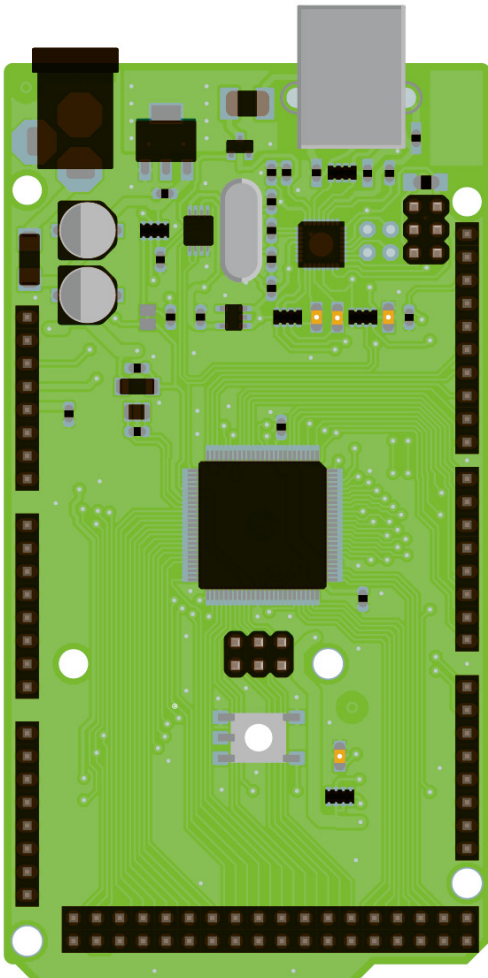


Green

what's
next?™



Interfaces

| | |
|--------|--|
| Serial | 4xUART (1 shared w/ USB), 1xSPI, 1xTWI |
| USB | 2.0 device |

General

| | |
|-------------------|------------------------------|
| Input Voltage | 5V (USB/ext.) or 7-12V (Vin) |
| Power Consumption | 38mA |
| PCB size | 53.3mm x 101.5mm |
| Weight | 36g |

Microcontroller

| | |
|-------------------------|--------------------------------|
| Microcontroller | ATmega2560 |
| Architecture | Microchip AVR 8-bit |
| Operating Voltage | 5V |
| Flash Memory | 256kB (8kB used by bootloader) |
| SRAM | 8kB |
| EEPROM | 4kB |
| Clock Speed | 16MHz |
| I/O Total | 54 |
| Digital (max) | 54 |
| PWM (max) | 12 |
| Analog (max) | 16 (10-bit resolution) |
| DC Current per I/O pins | 40mA (I/O pins) |