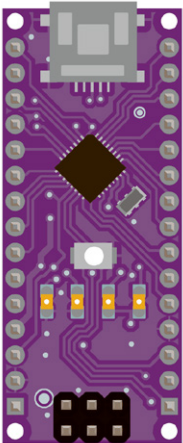


Purple

what's next?™



Interfaces

Serial	1xUART (shared w/ USB), 1xSPI, 1xTWI
USB	2.0 device

General

Input Voltage	5V (USB/ext.) or 7~12V (Vin)
Power Consumption	19mA
PCB size	18mm x 45mm
Weight	7g

Microcontroller

Microcontroller	ATmega328
Architecture	Microchip AVR 8-bit
Operating Voltage	5 V
Flash Memory	32kB (2kB used by bootloader)
SRAM	2kB
EEPROM	1kB
Clock Speed	16MHz
I/O Total	22
Digital (max)	22
PWM (max)	6
Analog (max)	8 (10-bit resolution)
DC Current per I/O pins	40 mA (I/O pins)