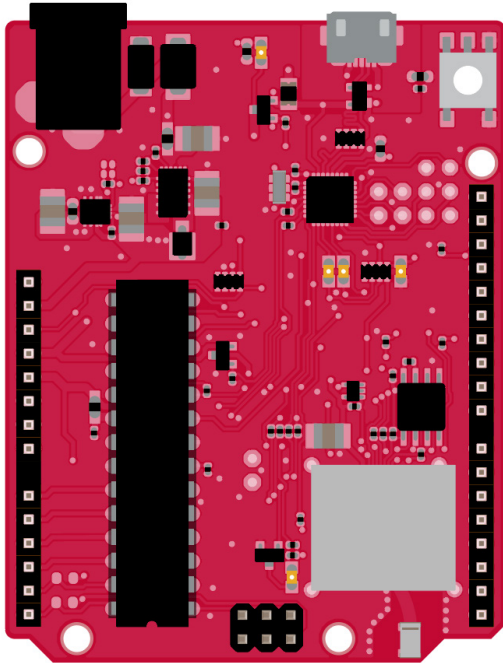


# Red

# what's next?™



## Interfaces

Serial	1xUART (shared w/ USB), 1xSPI, 1xTWI
USB	2.0 device
Wi-Fi	802.11 b/g/n 2.4GHz

## General

Input Voltage	5V (USB/ext.) or 7~12V (Vin)
Power Consumption	120mA
PCB size	53mm x 68.5mm
Weight	25g

## Microcontroller

Microcontroller	ATmega328
Architecture	Microchip AVR 8-bit
Operating Voltage	5V
Flash Memory	32kB (2kB as bootloader)
SRAM	2kB
EEPROM	1kB
Clock Speed	16MHz
I/O Total	20
Digital (max)	20
PWM (max)	6
Analog (max)	6 (10-bit resolution)
DC Current per I/O pins	40mA (I/O pins)

## Wi-Fi peripheral

Microcontroller	ESP8266EX
Architecture	Tensilica L106
External FLASH	64Mbit